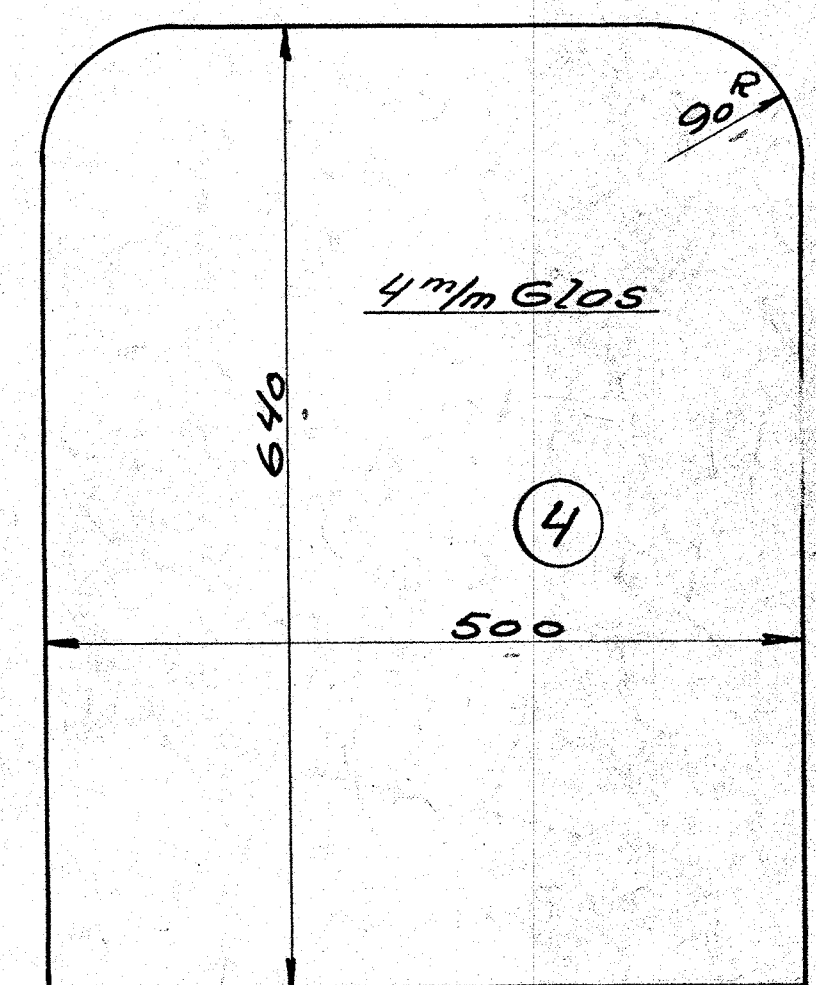
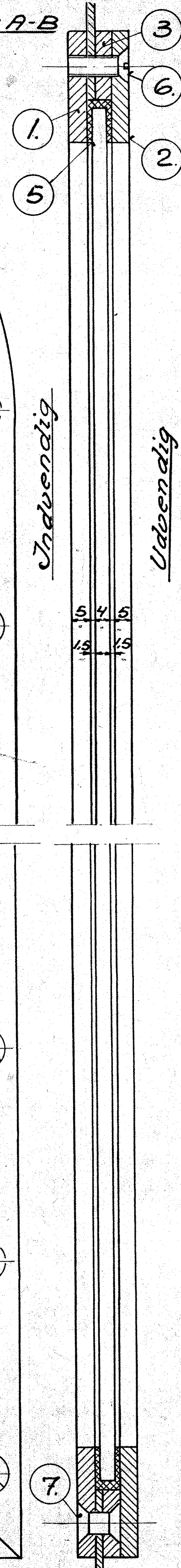
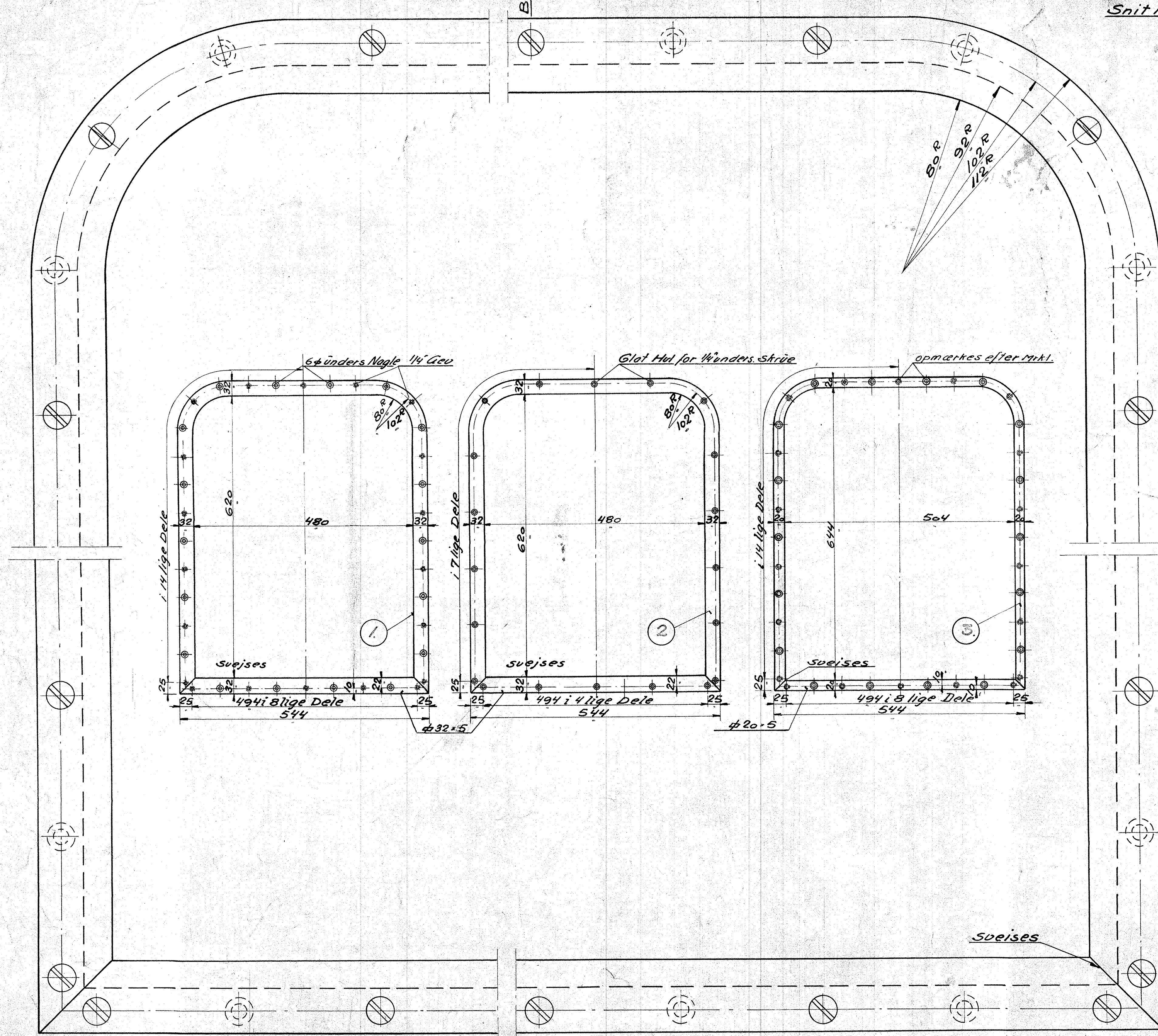


Snit A-B

			Fluss	
1	1	Ramme	Fluss	32 x 5 x 2350
2	1	-do-	-"-	32 x 5 x 2350
3	1	-do-	-"-	20 x 5 x 2360
4	1	Rude 640x500x4	Glas	Købes
5	1	Pakning til-do-	Gummi	U x 2300
6	20	Skrue 1/4" x 1 7/8"	Fluss	Magas
7	18	Nagle 6 x 18	-"-	-"-



FRICHS A/S

Fast Vindue i Førerhus-Forvæg

Diesel-el. 300 HK. Motorloko.

RT  
 HBR 1:5  
 25/2-32 1:1  
 115.L.15.18.